

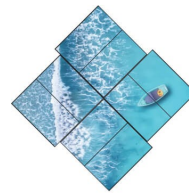


Key Features



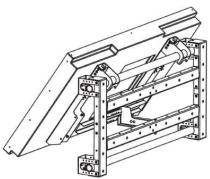
Remote Control

Any number of Vestel VWs can be remotely controlled over RS232 Loop configuration. This eases the installation process of the VW displays, by controlling and configuring all the units via PC at the same time.



Video Wall Controller Tool

This new software puts ease of use for Video walls by reaching Auto/Manual parameter setup on each/multi/all selected display, Remote control by IR Simulation or LAN/RS232 Control and Video and Picture rotation for Informal Layouts on one software.



Wall Mount Option

Vestel presents the Wall Mount option for landscape usage. Vestel Wall mounts are able to move in all possible directions making it easy to place and align the bezels perfectly.



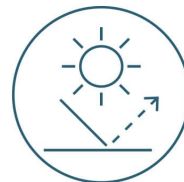
Eco Design

Vestel VWs are made to operate at lower energy usage while performing at high levels. Also, Vestel follows the worldwide standards for limiting harmful substances and eliminating waste products.



Longer Stability

Vestel VWs are able to tolerate longer hours of operation, equipped with pixel-shifting feature to prevent a fixed image from sticking on the screen.



Higher Visibility

Vestel panels come with anti-reflective treatment to decrease glare under strong light exposure. Aside from glare protection, 700 Nits VWs ensure high visibility even under high levels of ambient light.

Display

Screen Size	55"	Panel Technology	IPS
Backlight Type	DLED	Brightness (typical)	500 cd/m2
Native Resolution	1920x1080	Contrast Ratio (typical)	1100 : 1
Dynamic Contrast Ratio	500000 : 1	Life Time (typical)	60000hrs
Response Time (typical)	8 ms	Active Area (H x V)	1209.63(H) x 680.34(V)
Viewing Angle	178° Vert., 178° Hor. (89U/89D/89L/89R) @ CR>10	Color Value	1.07 B (10-bit)
Screen Treatment	2H	Haze Level	28%
Refresh Rate	60 Hz	Front Type	Razor Narrow Bezel
Orientation	Horizontal / Vertical	Operation Hours	24/7 Panel
Area of Usage	Indoor		

Built-in System

Mainboard Model	17MB135VS
-----------------	-----------

Rear I/Os

RGB Input	VGA(DE-15F)	RGB Output	N/A
Video Input	2xHDMI2.0, 2xUSB2.0, USB2.0(Internal)	Video Output	HDMI2.0
Audio Input	Line In L/R	Audio Output	Headphone, Optic SPDIF
External Control	RS232(DE-9F), Ethernet(RJ45), Service(RJ12)	External Sensor	RJ12

Environmental Conditions

Operating Temperature	+50°C / 0°C	Operating Humidity	%90
-----------------------	-------------	--------------------	-----

Power

Power Supply	110 VAC - 240 VAC
--------------	-------------------

Power Consumption

Typical	138 W	Maximum	260 W
Deep Standby	0.5W		

Mechanical Features

Size	1210.5 (L) x 90.6 (D) x 681.2 (H) mm	Shipping Size	1366 (L) x 277 (D) x 836 (H) mm
Weight (kg)	27	Shipping Weight (kg)	37
Vesa Mounting Size	400 x 600	Bezel Width	0.88 mm (BezeltoBezel)

Features

Main Features	Videowall setup with Daisy-Chain, Open Content Management Support, Manual Fine Color Calibration, Videowall Scheduler, Auto-Launch, Auto-switch on Failover, Panel Lock	Mechanical Features	ON/OFF Button, IR Extender, Carrying Handles
Speaker	N/A		

Accessory

Standard	QSG, IB, Power Cord, Remote Control, RC Battery, Display Port Cable, USB to Rs232 Converter	Mounting Kit	Standard
----------	---	--------------	----------

Certification

Safety	Yes	EMC	Yes
CE	Yes		