

Vestel Video Wall Controller

User Guide

Web : <http://b2bsupport.vestel.com.tr>
Mail : b2bsupport@vestel.com.tr
Tel : +90 212 286 01 06

Vestek Elektronik Ar-Ge A.Ş.
İTÜ Ayazağa Kampüsü Koru Yolu
Arı 2-B Blok Maslak/İstanbul

[Comments]

1. Revision History

Web : <http://b2bsupport.vestel.com.tr>
Mail : b2bsupport@vestel.com.tr
Tel : +90 212 286 01 06

Vestek Elektronik Ar-Ge A.Ş.
İTÜ Ayazağa Kampüsü Koru Yolu
Arı 2-B Blok Maslak/İstanbul

2. Table of Contents

1.	Revision History.....	2
2.	Table of Contents	3
3.	Figures	3
4.	Functionality Overview	4
5.	User Interface	4
5.1.	Video Wall Configuration	5
5.2.	Video Wall Layout Wizard	6
5.3.	Video Wall Adjustment.....	7
5.4.	Color Adjustment	9
5.5.	Remote Control	10
5.6.	RS232 Command	12
5.7.	Rotation Setup	14
5.8.	Synchronization.....	15
5.9.	Informal Layout.....	15

3. Figures

Figure 5-1 :	Video Wall Setup Outline	5
Figure 5-2 :	Video Wall Layout Wizard Outline.....	6
Figure 5-3 :	Video Wall Adjustment Outline.....	8
Figure 5-4 :	Color Adjustment Outline	9
Figure 5-5 :	Remote Control Outline.....	11
Figure 5-6 :	RS232 Command Outline.....	12
Figure 5-7 :	HEX Command	13
Figure 5-8 :	Rotation Setup Outline	14
Figure 5-9 :	Informal Layout Outline.....	15

4. Functionality Overview

Video Wall Toolbox is a software tool that allows users to manage and control the video wall or multi-display. Video Wall Toolbox can:

1. Auto setup the video wall parameters (Matrix X/Y, Division X/Y, and Monitor ID) for each display or all display or multi selected display.
2. Manually adjust the video wall parameters.
3. Manually adjust image parameters. (Brightness, Contrast, Color temperature, and so on)
4. Simulate the remote IR key.
5. Support all RS-232 command set.
6. Rotate your video in desired angel (in degree or in radian)

Examples shown in these instructions may have minor differences compared to the actual Video Wall Toolbox for your specific display model.

5. User Interface

Video Wall Toolbox has a user-friendly, graphical interface (see Figure 1.) where you can execute the RS-232 commands easily.

There are 7 items in main menu:

1. Video Wall Configuration
2. Video Wall Adjustment
3. Color Adjustment
4. Remote Control
5. RS232 Command
6. Rotation Setup
7. Synchronization
- 7.Informal Layout

5.1. Video Wall Configuration

This control page must be set up correctly before running the other function of the Video Wall Toolbox. To enter the Video Wall Configuration page, move the cursor to the “Video Wall Setup” in Main Menu Items. And then click it.

In the Video Wall Configuration page, you can:

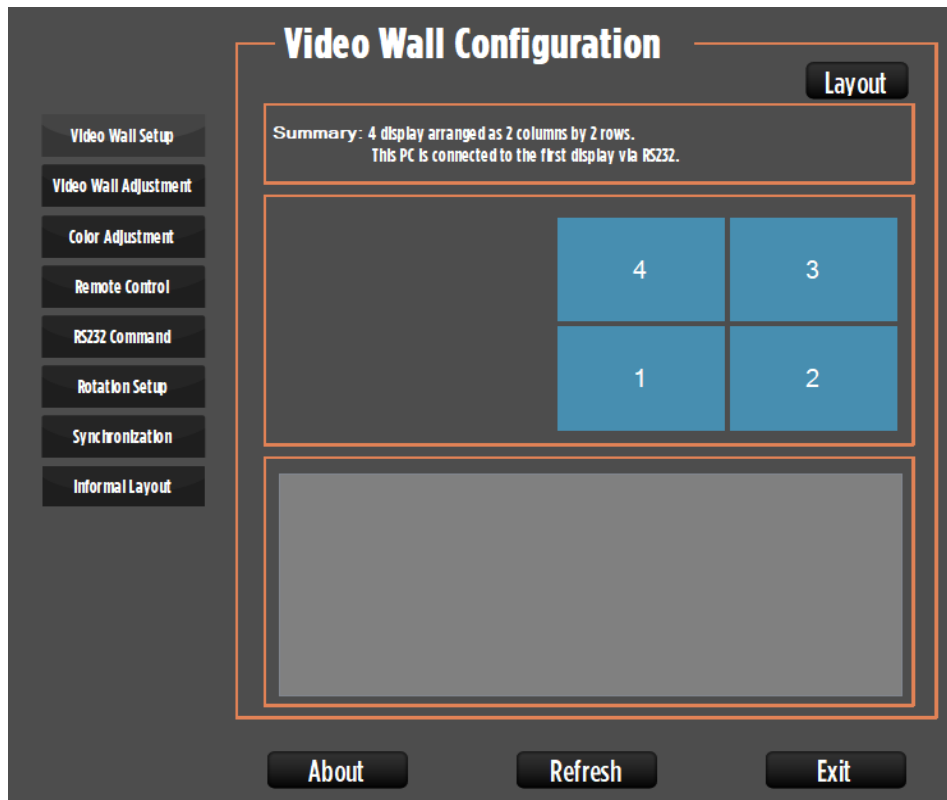


Figure 5-1 : Video Wall Setup Outline

1. Show the summary of the video wall configuration.
2. Layout setup: Setup the video wall layout and connection method. Press “Layout setup” button, and then enter to Video Wall Layout Wizard menu.

5.2. Video Wall Layout Wizard

To enter the Video Wall Layout Wizard page, press the “Layout setup” button in the Video Wall Configuration menu. Please see the Figure 5-2.

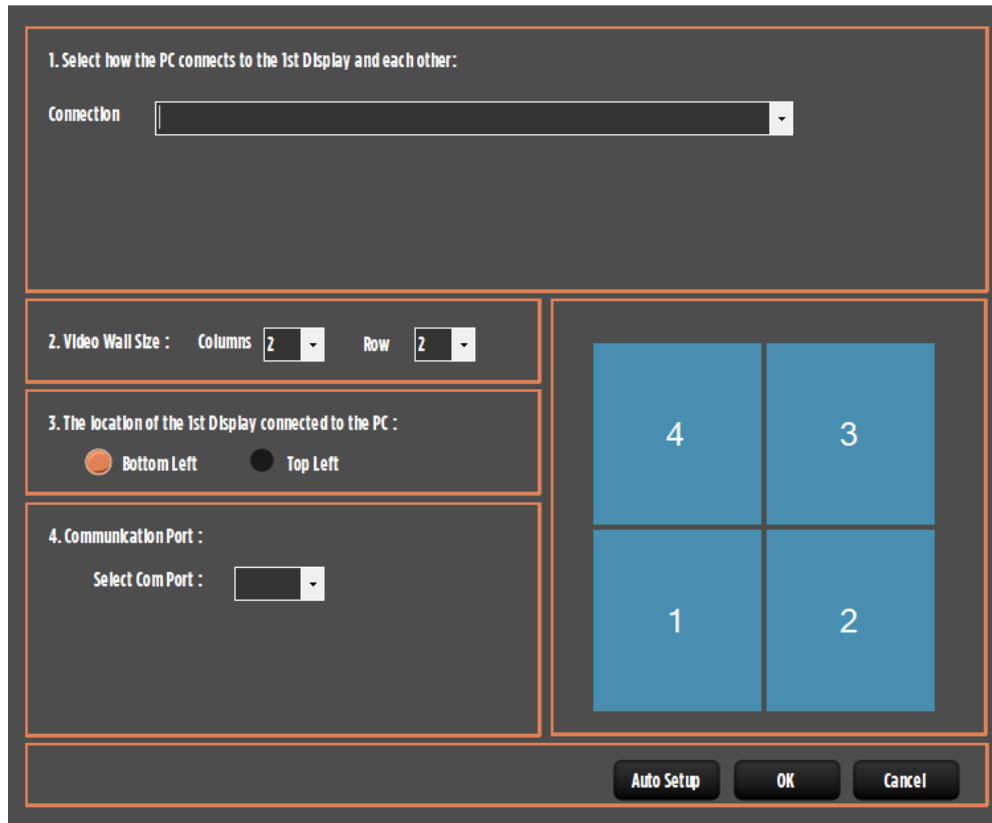


Figure 5-2 : Video Wall Layout Wizard Outline

In the Video Wall Layout Wizard page, you can:

1. Select how the PC connects to the 1st Display and each other:

(A) Single COM port with daisy-chained RS232.

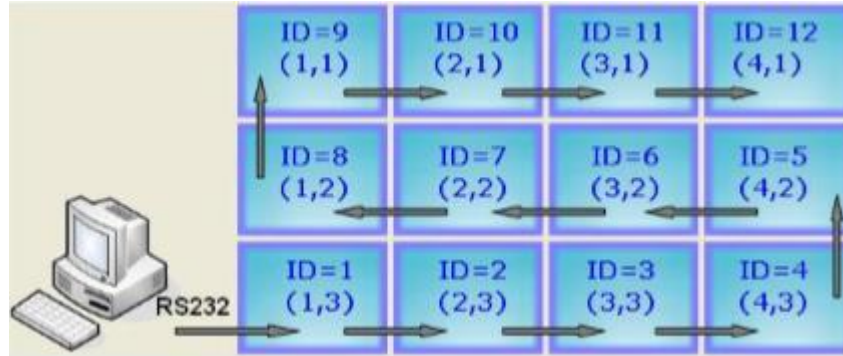


(B) Single LAN with daisy-chained RS232.

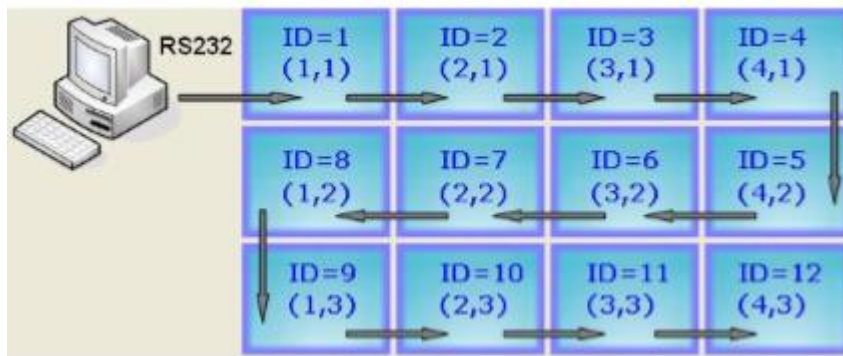


2. Select the video wall size from 1x1 to 10x10.
3. The location of the 1st Display connected to the PC:

(A) Bottom left



(B) Top left.



4. Select the communication port: The RS-232 COM port or the IP address must be configured correctly.

5.3. Video Wall Adjustment

The users manually adjust the all video wall parameters from this control page. To enter the Video Wall Adjustment page, move the cursor to the “Video Wall Adjustment” in Main Menu Items. And then click it. Please see Figure 5-3.

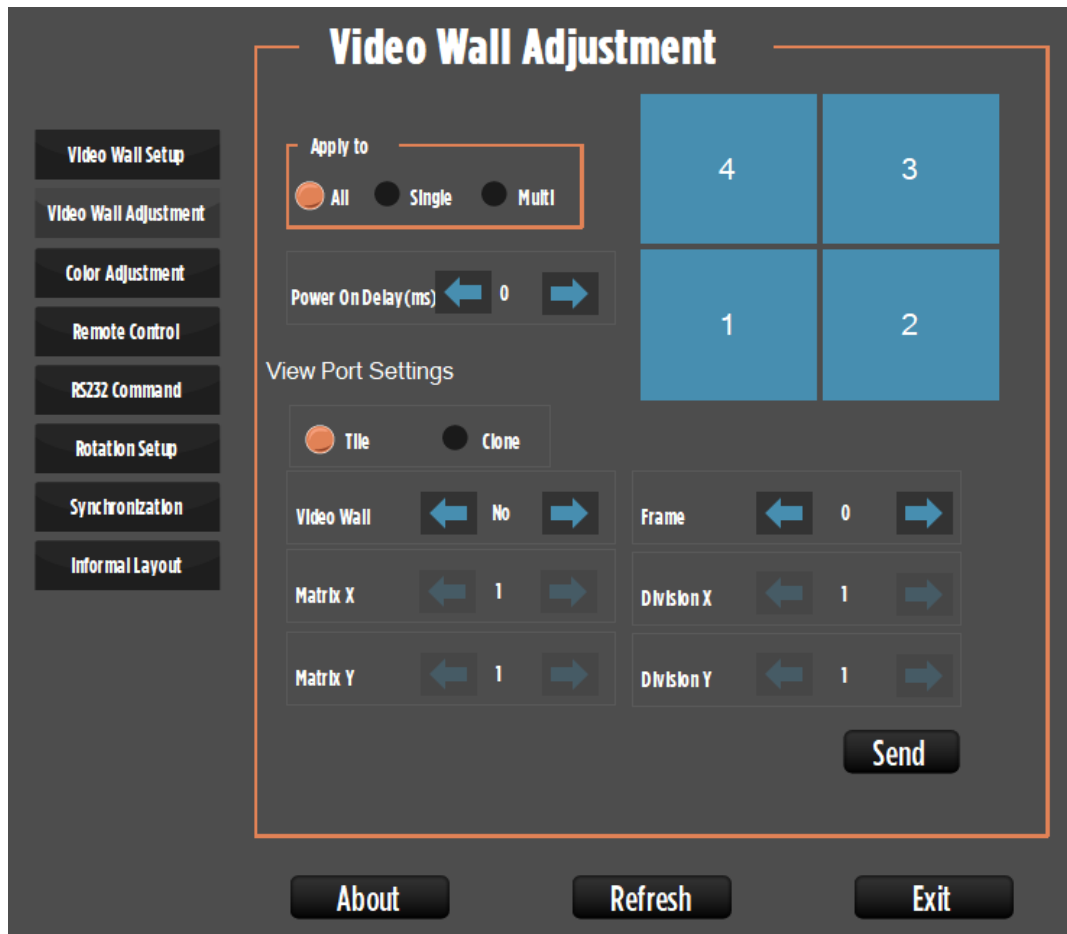


Figure 5-3 : Video Wall Adjustment Outline

In the Video Wall Adjustment page, you can:

1. Select the target Display: The users can also select “All” or “Multi” to control the all displays or multiple displays at the same time.

2. Show the location and Monitor ID of target display: It is useful for the users to find the target display easily. Besides, the users can also move the cursor to the specific monitor and then click it. Then the Monitor ID of target Display will change to the Monitor ID which has been clicked. (see Figure 7)

3. Video Wall parameters adjust: Press right or left arrow button to adjust the specific parameter. It includes:

- (a). Power On Delay
- (b). Video Wall

Web : <http://b2bsupport.vestel.com.tr>
 Mail : b2bsupport@vestel.com.tr
 Tel : +90 212 286 01 06

Vestek Elektronik Ar-Ge A.Ş.
 İTÜ Ayazağa Kampüsü Koru Yolu
 Arı 2-B Blok Maslak/İstanbul

- (c). Frame
- (e). Matrix X
- (f). Matrix Y
- (g). Division X
- (h). Division Y

5.4. Color Adjustment

The users can also adjust the all color parameters from this control page. To enter the Color Adjustment page, move the cursor to the “Color Adjustment” in Main Menu Items. And then click it. Please see Figure 5-4.

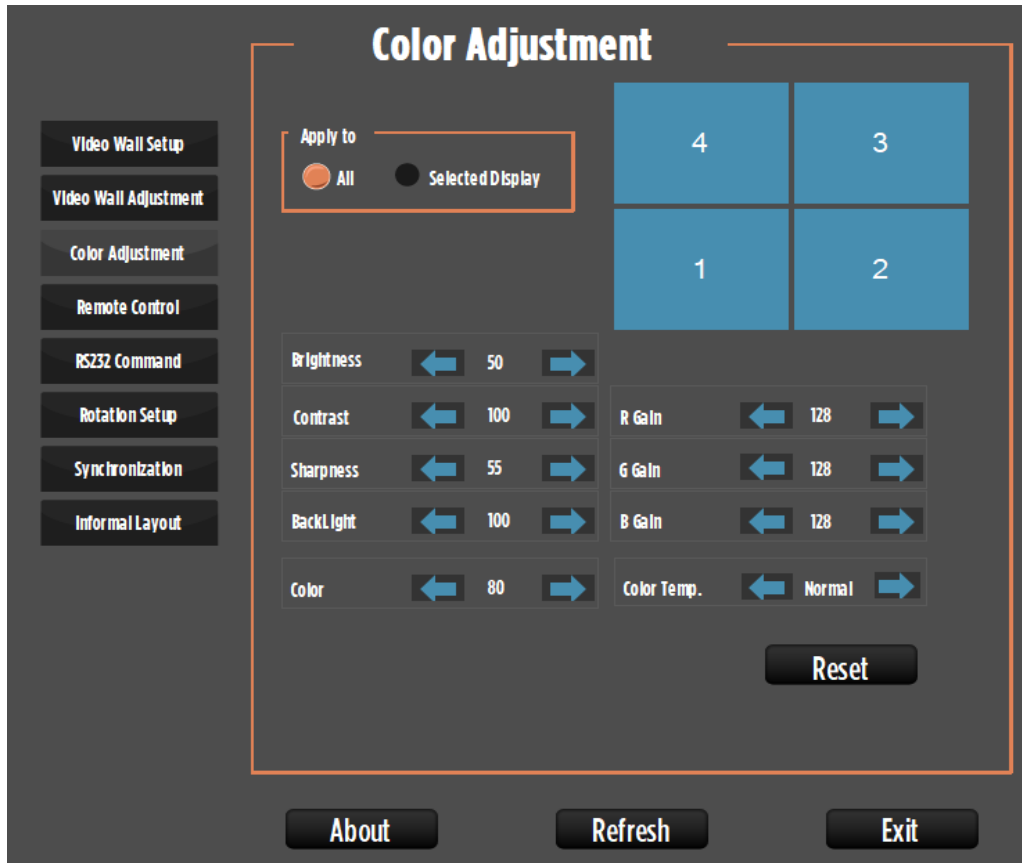


Figure 5-4 : Color Adjustment Outline

Web : <http://b2bsupport.vestel.com.tr>
 Mail : b2bsupport@vestel.com.tr
 Tel : +90 212 286 01 06

Vestek Elektronik Ar-Ge A.Ş.
 İTÜ Ayazağa Kampüsü Kuru Yolu
 Arı 2-B Blok Maslak/İstanbul

In the Color Adjustment page, you can:

1. Select the target Display: The users can also select “All” to control the all displays at the same time.
2. Show the location of target display: After select the Monitor ID of target display, the location of target display will be shown. It is useful for the users to find the target display easily. Besides, the users can also move the cursor to the specific monitor and then click it. Then the Monitor ID of target Display will change to the Monitor ID which has been clicked.
3. Refresh: Press this button to refresh the data from target display.
4. Color parameters adjust: Press right or left arrow button to adjust the specific parameter. It includes:

- (a). Brightness
- (b). Contrast
- (c). Sharpness
- (d). Backlight
- (e). Color Temperature
- (f). Color
- (h). Red Gain
- (h). Green Gain
- (i). Blue Gain

5.5. Remote Control

The users can send the IR commands to the target display from this control page. It’s just like using the remote controller. To enter the Remote Control page, move the cursor to the “Remote Control” in Main Menu Items. And then click it. Please see Figure 5-5.

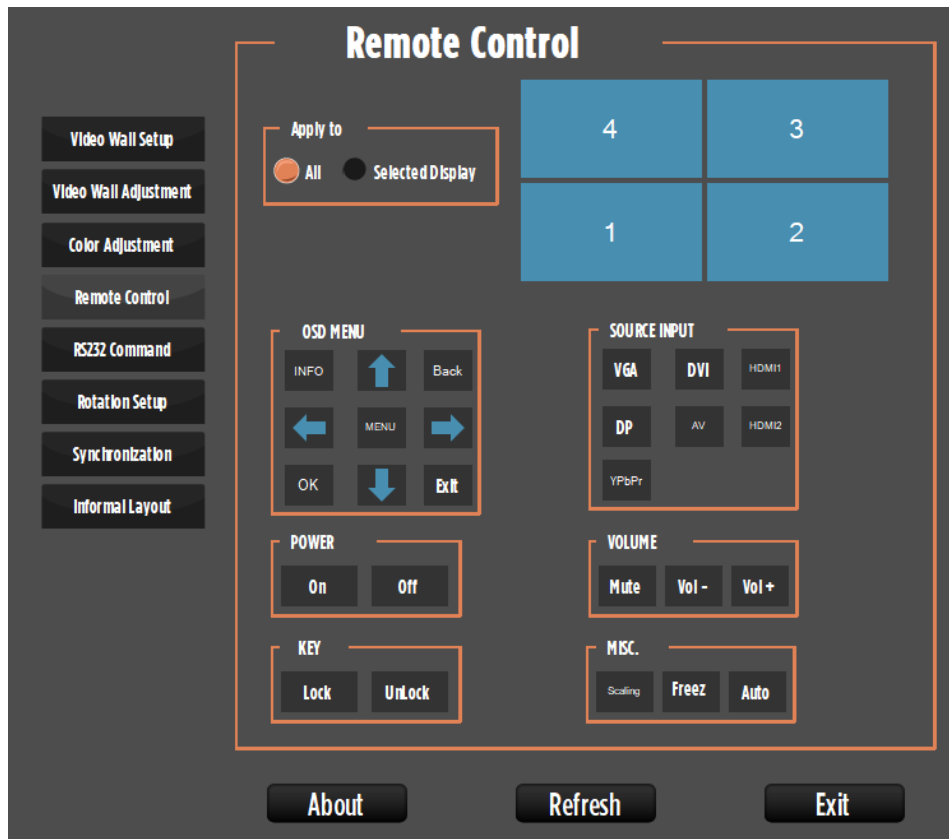


Figure 5-5 : Remote Control Outline

In the Remote Control page, you can:

1. Select Monitor ID of target Display: The users can also select “All” to control the all displays at the same time.
2. Show the location of target display: After select the Monitor ID of target display, the location of target display will be shown. It is useful for the users to find the target display easily. Besides, the users can also move the cursor to the specific monitor and then click it. Then the Monitor ID of target Display will change to the Monitor ID which has been clicked. (see Figure 7)
3. Send IR Command: Press any button to send the specific IR command to the target display. It includes:
 - (a). OSD Menu button: Info, Back, Menu, Enter, Exit, Up, Down, Left, and Right.
 - (b). Source Input button: VGA, DVI, HDMI1, HDMI2, AV, YPbPr and DP.
 - (c). Power button: Power On and Power Off.

Web : <http://b2bsupport.vestel.com.tr>
 Mail : b2bsupport@vestel.com.tr
 Tel : +90 212 286 01 06

Vestek Elektronik Ar-Ge A.Ş.
 İTÜ Ayazağa Kampüsü Koru Yolu
 Arı 2-B Blok Maslak/İstanbul

- (d). Volume button: Mute, Volume Up, and Volume Down.
- (e). Key button: Lock and Unlock.
- (f). Misc. button: Scaling, Freeze, and Auto.

5.6. RS232 Command

The users can send the specific RS-232 command from this control page. To enter the RS-232 Command page, move the cursor to the “RS-232 Command” in Main Menu Items. And then click it. Please see Figure 5-6.

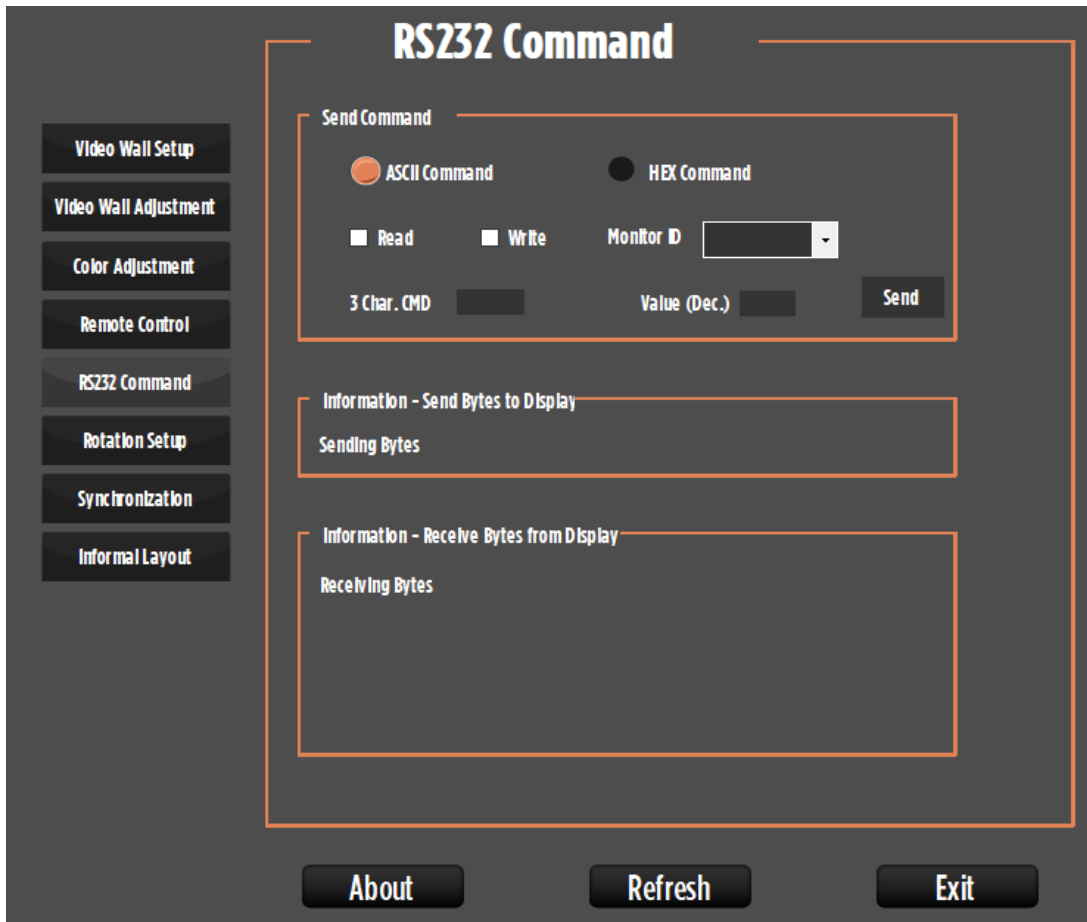


Figure 5-6 : RS232 Command Outline

Web : <http://b2bsupport.vestel.com.tr>
 Mail : b2bsupport@vestel.com.tr
 Tel : +90 212 286 01 06

Vestek Elektronik Ar-Ge A.Ş.
 İTÜ Ayazağa Kampüsü Koru Yolu
 Arı 2-B Blok Maslak/İstanbul

In the RS-232 Command page, you can: 1. Input the specific RS-232 command and then press “Send” button to send to the target display. There are two methods to input the RS-232 command:

(A). ASCII Command: The users need to input the below four part of data to send a correct RS-232 command. Please see Figure 11. (a). Select the command type: Write or Read. (b). Select the Monitor ID of the target display. (c). Input the 3 characters ASCII command. The users can move the cursor to the “3 Char. CMD” and then click it. Then it will show the all command set and examples (see Figure 12). Please note that the command set may have some differences in display models. (d). For Write-Type command, the users must input the value.

(B). Hex Command: The users can input any 7 bytes or 8 bytes HEX values (see Figure 13). Please note that the input HEX values must follow the RS-232 protocol, otherwise no response form display.

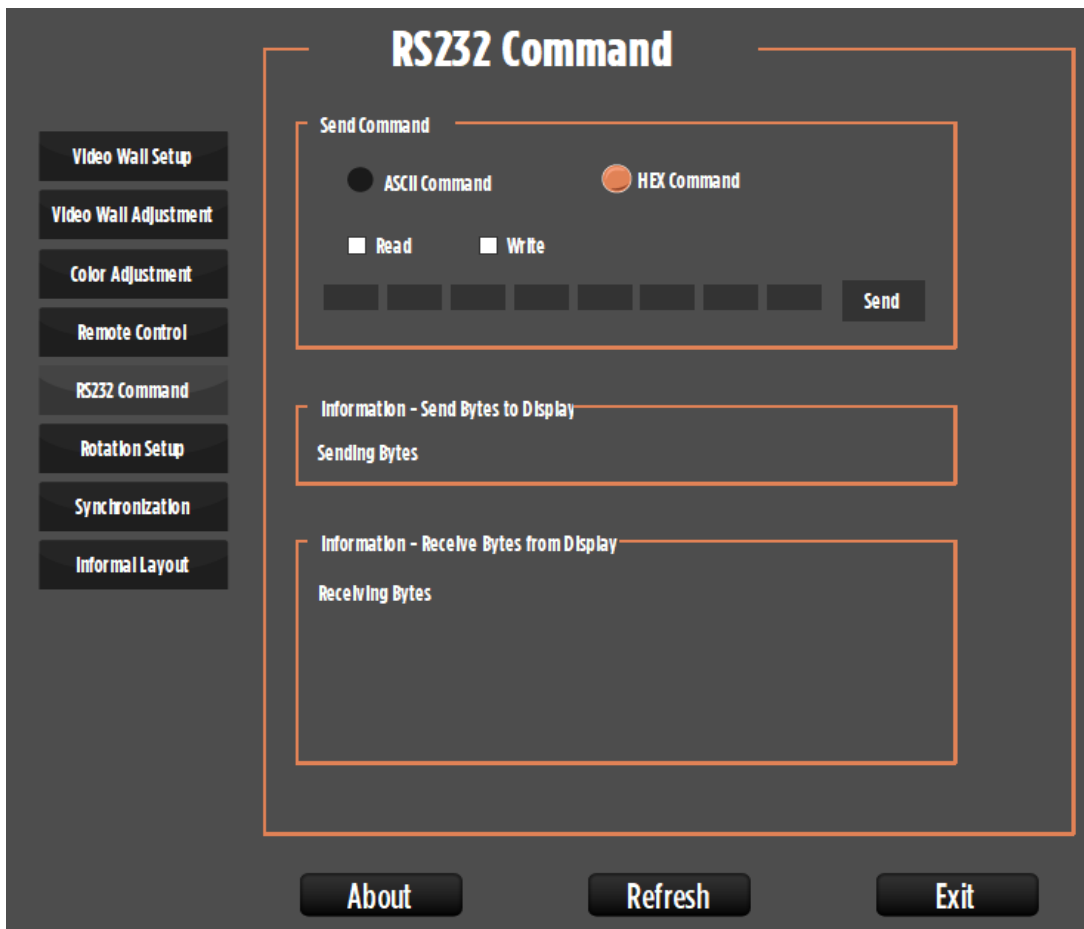


Figure 5-7 : HEX Command

Web : <http://b2bsupport.vestel.com.tr>
 Mail : b2bsupport@vestel.com.tr
 Tel : +90 212 286 01 06

Vestek Elektronik Ar-Ge A.Ş.
 İTÜ Ayazağa Kampüsü Koru Yolu
 Arı 2-B Blok Maslak/İstanbul

5.7. Rotation Setup

The users can rotate the video or picture. To enter the Rotation Setup page, move the cursor to the “Rotation Setup” in Main Menu Items. And then click it. Please see Figure 5-6.

1. Open video (rotated video selection). After selection, a new button named as “Save Rotated Video” is appeared.
2. Define the item to be rotated display or video
3. Enter rotation degree in degree or radian
4. Enter desired resolution.
5. Save the rotated video.

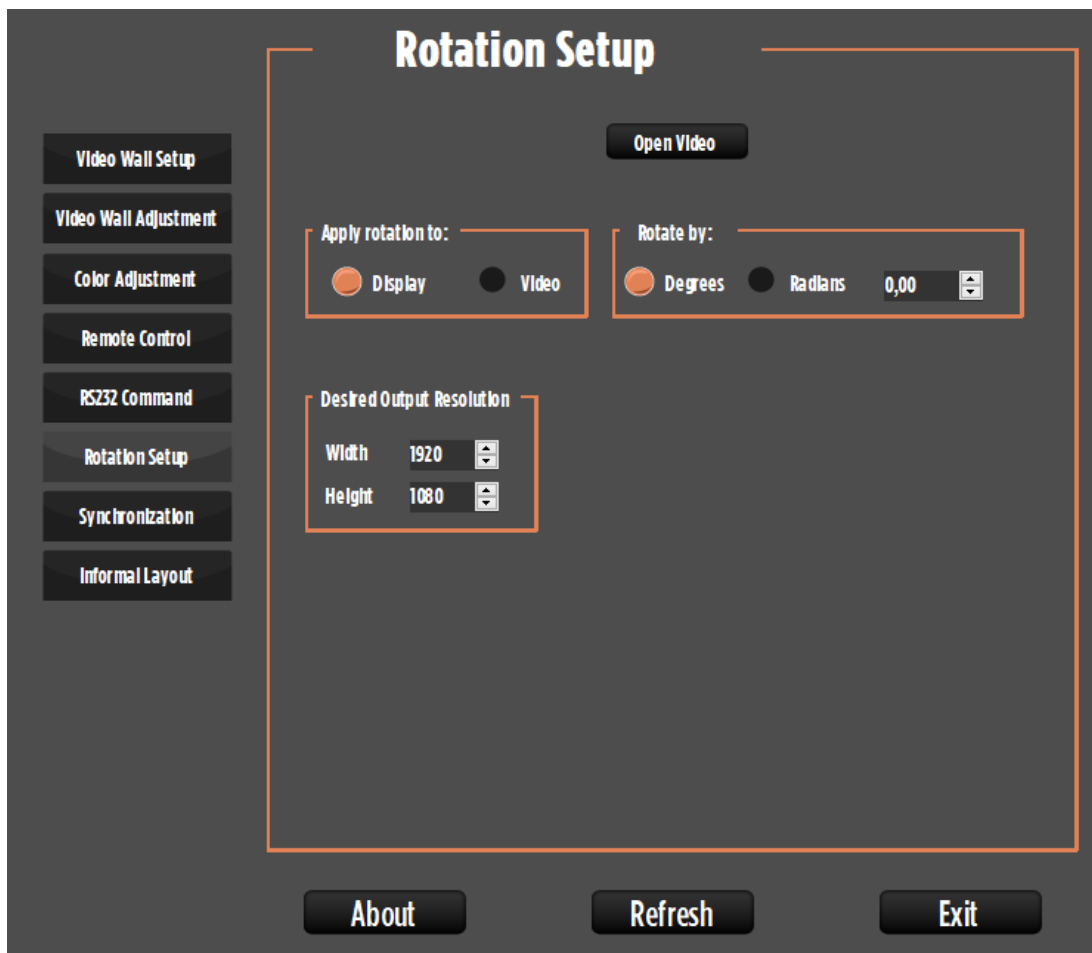


Figure 5-8 : Rotation Setup Outline

5.8. Synchronization

This button redirect to Vsync. Usage of Vsync is same synchronization tool.

5.9. Informal Layout

The users can draw informal layout with displays. To enter the Informal Layout page, move the cursor to the “Informal Layout” in Main Menu Items. And then click it and see the new opening page. Please see Figure 5-9.

1. Enter the informal layout width and height.
2. Drag and drop the displays selected from Active Displays, inside the layout area.
3. Displays can be moved, deleted, aligned and rotated.
4. After creation of informal layout, click the “Send” button and see file explorer.
5. Select the video from file explorer.
6. Then, see the output video file named as out + DisplayID.

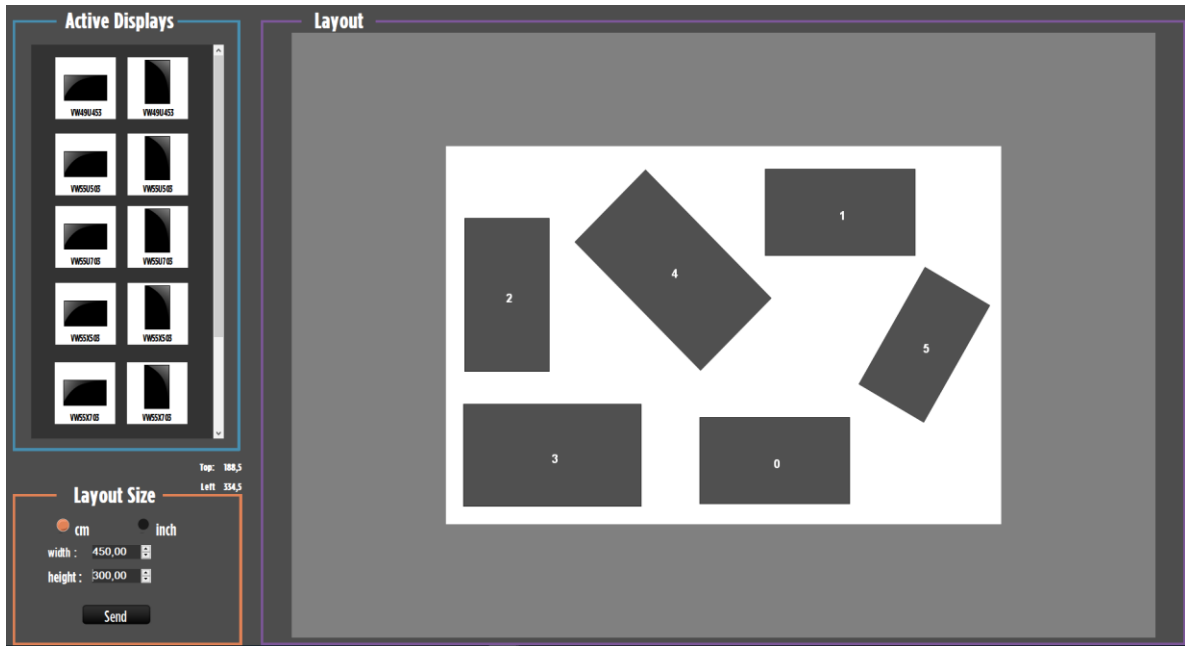


Figure 5-9 : Informal Layout Outline

Web : <http://b2bsupport.vestel.com.tr>
 Mail : b2bsupport@vestel.com.tr
 Tel : +90 212 286 01 06

Vestek Elektronik Ar-Ge A.Ş.
 İTÜ Ayazağa Kampüsü Koru Yolu
 Arı 2-B Blok Maslak/İstanbul